

The side panel sunshade may be mounted on the left or right side of the awning.

CAUTION : Set the awning **power switch to off** to prevent the awning from retracting when the side panel sunshade is installed.

CAUTION : Do not roll up the awning with the side panel sunshade attached. The awning may not operate correctly and damages to the awning canopy and side panel sunshade fabric could occur.

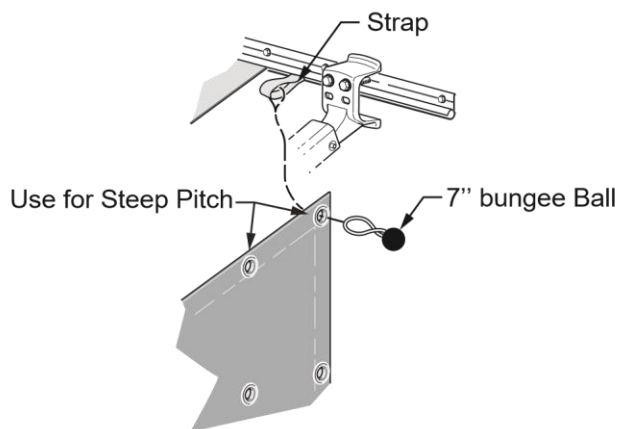


Fig. 1

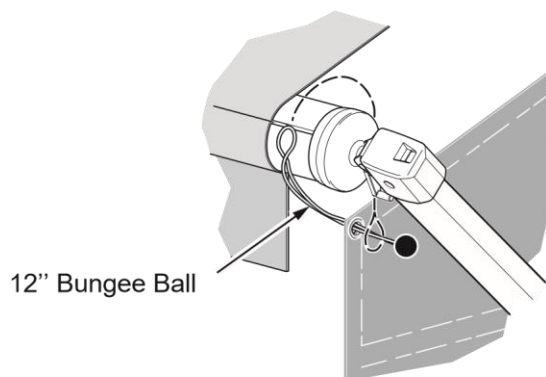


Fig. 2

SETUP:

1. Open and set the awning according to the manufacturer's instructions.
2. Position the strap in the awning rail and center it between the canopy and the awning's upper arm.
3. Unfold the fabric.
4. Slide the short (7") bungee ball assembly through an eyelet at the top of the panel. Use the grommet that best matches the pitch and extension of the awning (Fig. 1).
5. Loop the bungee into the hook strap and around the bungee assembly ball.
6. Lift the front edge of the fabric and thread the long (12") bungee assembly through the grommet (Fig. 2).
7. Loop the bungee over the roll bar and around the bungee assembly ball.
8. Use the supplied stakes and cord to secure the bottom of the side panel sunshade through the eyelets.

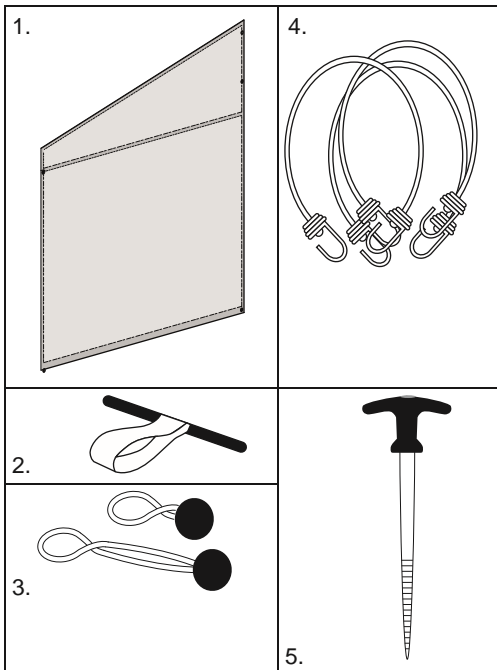
FABRIC CARE:

1. Do not use any type of caustic, granulated or abrasive cleaners.
2. The best way to keep the fabric looking good and delay the need for deep or vigorous cleanings is to hose the fabric on a monthly basis with clear water. This practice will help prevent dirt from becoming deeply imbedded in the fabric.
3. However, a thorough cleaning will be needed every year. The fabric can be cleaned while still installed on the awning tube. Use a soft brush and warm water with MAGIC-BOSS™ CITRUS AWNING CLEANER, a natural and eco-friendly product specially formulated to remove built up dirt, tree sap and tough stains. Air-dry only. Never apply heat to the fabric. Always allow the fabric to dry thoroughly before folding and storing

MILDEW

Mildew is a fungal growth that looks like dirt. Vinyl-coated polyester fabrics are mildew resistant because of a chemical biocide in the vinyl coating. Under ordinary conditions, mildew will not appear. However, in areas where high temperatures and humidity are common, mildew can be a problem and requires the material to be washed more frequently. Thoroughly rinse the fabric with clean water and air dry completely before folding and storing.

ILLUSTRATED PARTS LISTS



ITEM	DESCRIPTION	QTY
1	SIDE PANEL SUNSHADE	1
2	STRAP	1
3	BUNGEE BALL 7"(1) & BUNGEE BALL 12"(1)	2
4	BUNGEE CORD 24"	3
5	GROUND METAL STAKES 8"	3

LIMITED WARRANTY: Please read and understand the instructions before attempting to use your new Boss Shadow awning side panel sunshade Boss Technology Inc. (hereafter referred to as Boss) warrants to the first retail purchaser that the side panel sunshade is free of defects in material and workmanship for one (1) year from original date of purchase. This warranty does not apply to damages that are the result of wind or rain, improper installation, misuse or neglect. Although the material used is very tough, it can tear on installation if done improperly and Boss will assume no liability for such an installation. In addition, wear and fading from normal use is excluded from this warranty. **WARRANTY CLAIM PROCEDURE**
1. Retain a copy of the original purchase receipt. 2. If the product is found defective within the warranty period, return the product along with the original purchase receipt to your authorized Boss Shadow dealer. 3. All returns are for product replacement only. No return for reimbursement or credit is accepted. 4. Boss does not cover any costs associated with the return of the product.